



If we don't have the right information, we can't make the right decisions!
If we don't provide the information, we can't make any decisions!!





From Humble Beginnings in '99!

Then:

- Big Aspirations
- No infrastructure
- Little knowledge
- Paper data from 1800's
- Science on sailboats*

Now:

Resources:

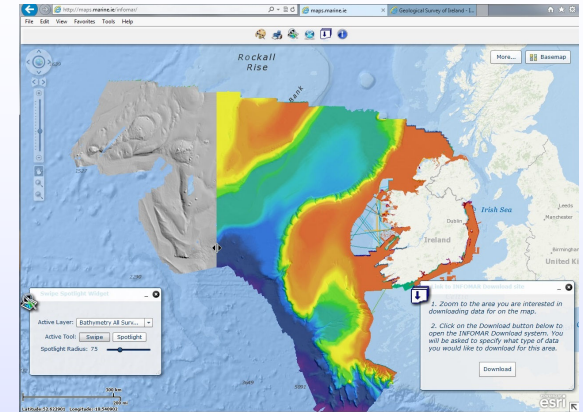
- 5 MBES fitted survey **vessels** (3 new in 2014)
- Improved **knowledge** capacity (Ops / Data / ICT)
- National & EU support for **mapping** initiatives
- Approx. 20 people

Data:

- V. large publicly accessible online multibeam **dataset**
- 55 Tb data holding / **150 Tb server**
- Striving towards an "*Irish Digital Ocean*"

R&D:

- Since 2008, 46 projects funded directly (>€1.25m)
- Research collaboration - Caris / Proteus / Kongsberg
 - Atlantic Centre for Earth Observations (ACE-Obs)*
(In-situ obs / Informatics / Modelling / Remote Sensing)
- Horizon 2020 ready –
(10+ 3rd level R&D org. /100+ ocean tech companies)



Ireland's Role in Marine Policy

2013 Milestones

- Atlantic Action Plan 2014-2020
- Galway Statement on **Trans-Atlantic Ocean Co-operation (May 2013)**
- Horizon 2020 – *Ocean observation & seabed mapping*



Galway Statement:

Common Objective, by 2020 to have: Mapped the Atlantic to underpin the accuracy of predictive models and forecasts and identified key tectonic /volcanic sites, as well as ecologically and economically important (and potentially undiscovered) seafloor and water column habitats.

Key Challenge: Build an industry, academia, and government cross sector vision of a shared data collection, management and information infrastructure.



Seated L to R:
Recommendations: Establish mechanisms to promote trans-Atlantic data sharing, using a seabed mapping test case.

- **Senator David M. Wells, Parliament of Canada;**
 - Ms Maria Damalaki, Commissioner for Maritime Affairs and Fisheries;
 - Ms Máire Geoghengan-Quinn, Commissioner for Research Innovation and Science;
 - **Dr Kerri-Anne Jones, Assistant Secretary for Oceans and Int. Environmental and Scientific Affairs, US Dept. of State**
- Laying Down The Challenge.**
- Standing L to R:
- Mr Enda Kenny, T.D., Taoiseach, Mr Simon Coveney T.D., Irish Minister for Agriculture, Food and the Marine



Ireland's Role / **Marine Mapping** / Adding Value

Irish Survey Programmes

Irish National Seabed Survey (GSI)

1999-2005, €32m – largely outsourced

INFOMAR (GSI & MI Partnership)

2006-2026, €80m – *largely self survey*

“**I**Ntegrated Mapping **F**Or the Sustainable Development of Ireland's **M**arine **R**esource”

PHASE 1: 2006 – 2015 26 Bays / 3 P. Areas

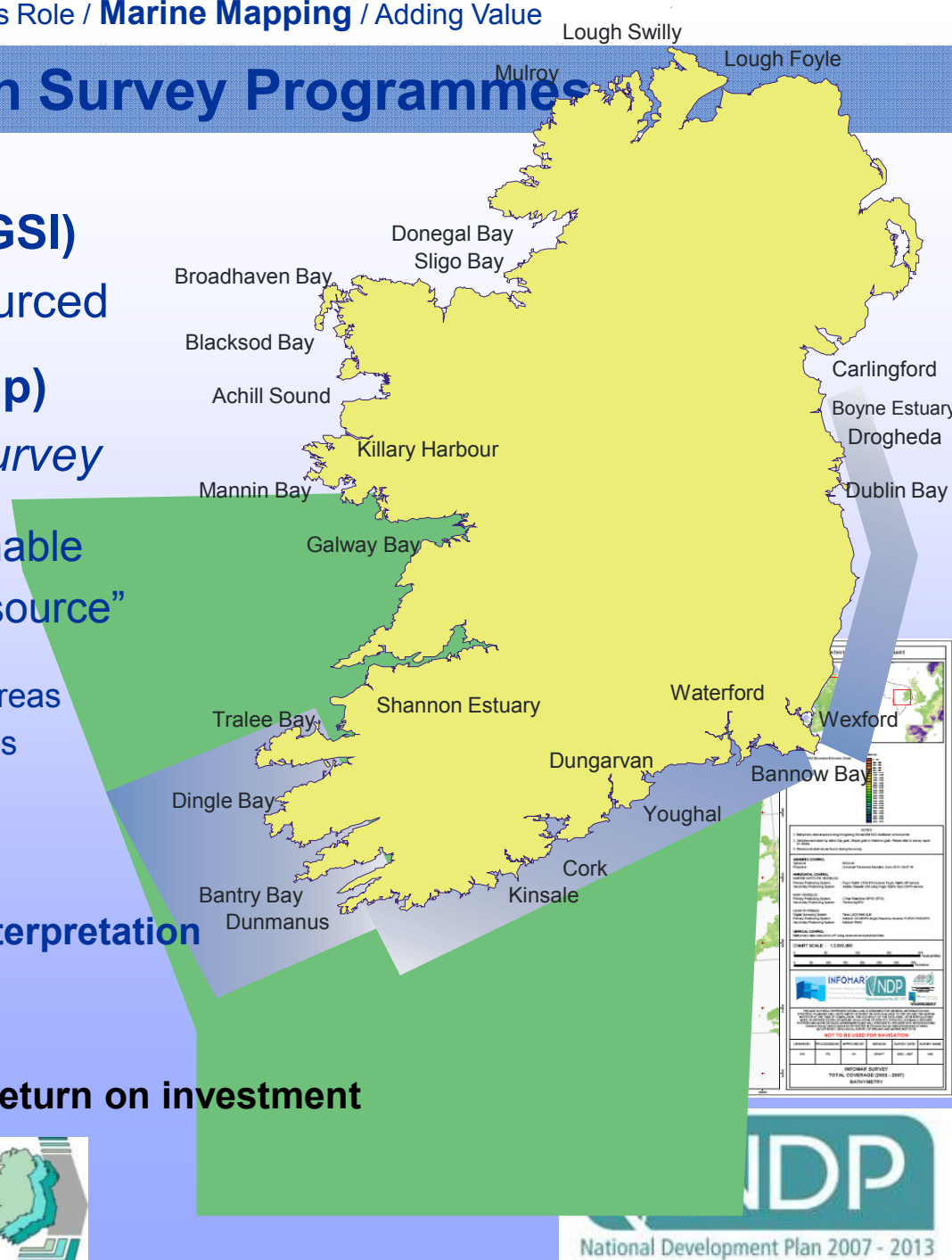
PHASE 2: 2016 – 2025 Remaining Areas

€3m per annum to 2018

Programmes:

1. Data Acquisition, Management & Interpretation
2. Data Exchange & Integration
3. Value Added Exploitation

2008 PWC Cost Benefit Analysis: 4-6 return on investment





What Does INFOMAR Provide?

Free Access
Charts / Maps
Data (Raw / Processed)

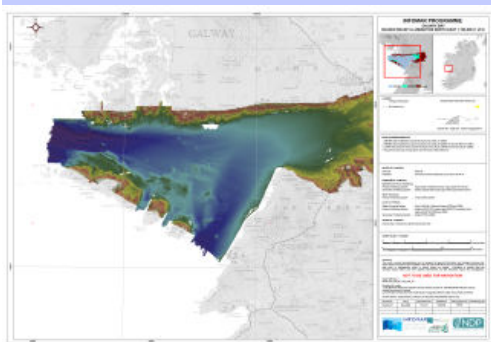
- Google Earth
- Fledermaus DTM's
- ArcMap Grids

Reports
Publications

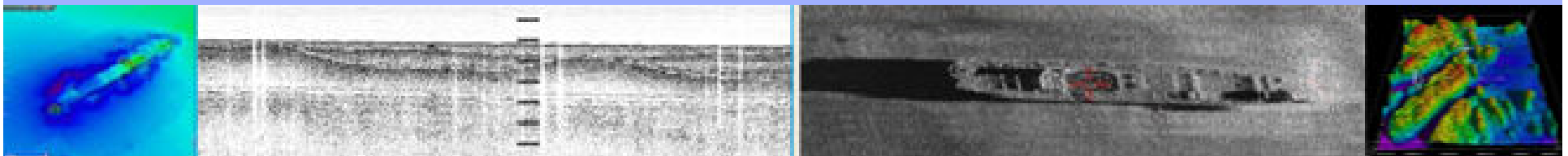
WWW.INFOMAR.IE

ACCESS PRODUCTS BY:

- Bay
- Chart
- Type
e.g. Google Earth Files



The screenshot shows the INFOMAR website's homepage. At the top is the INFOMAR logo and tagline. Below this is a navigation menu with links: About, Surveying, Data and Products, News and Updates, Press Releases, Publications, Associated Projects, Image Gallery, and Infomar Blog. The main content area features a "Welcome to the INFOMAR website" message, a map of Ireland, and two featured sections: "The Real Map Of Ireland" (describing the designated continental shelf area) and "Atlas of the Deep-Water Seabed: Ireland" (describing a 3D compilation of submarine canyons and abyssal plains).





Client Decision Support Data?

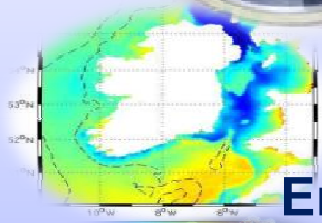
Government

Industry



Efficiency

Resource



Environment

Clients All Have Different Needs

Safety

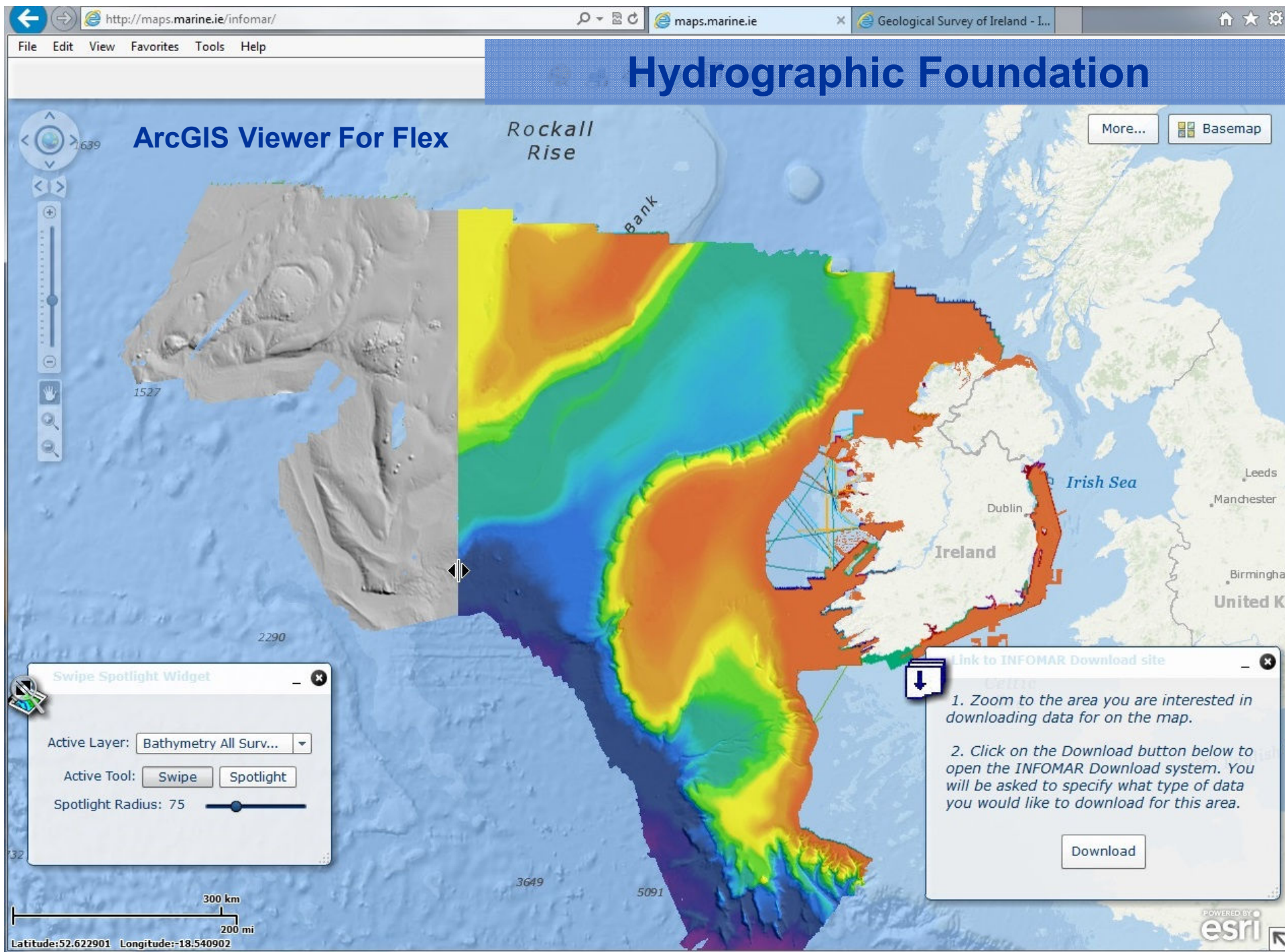


Risk

Academia

Public

Global Market Opportunities ↔ Trans-Atlantic Cooperation



Spatial Data Overlay - Decisions

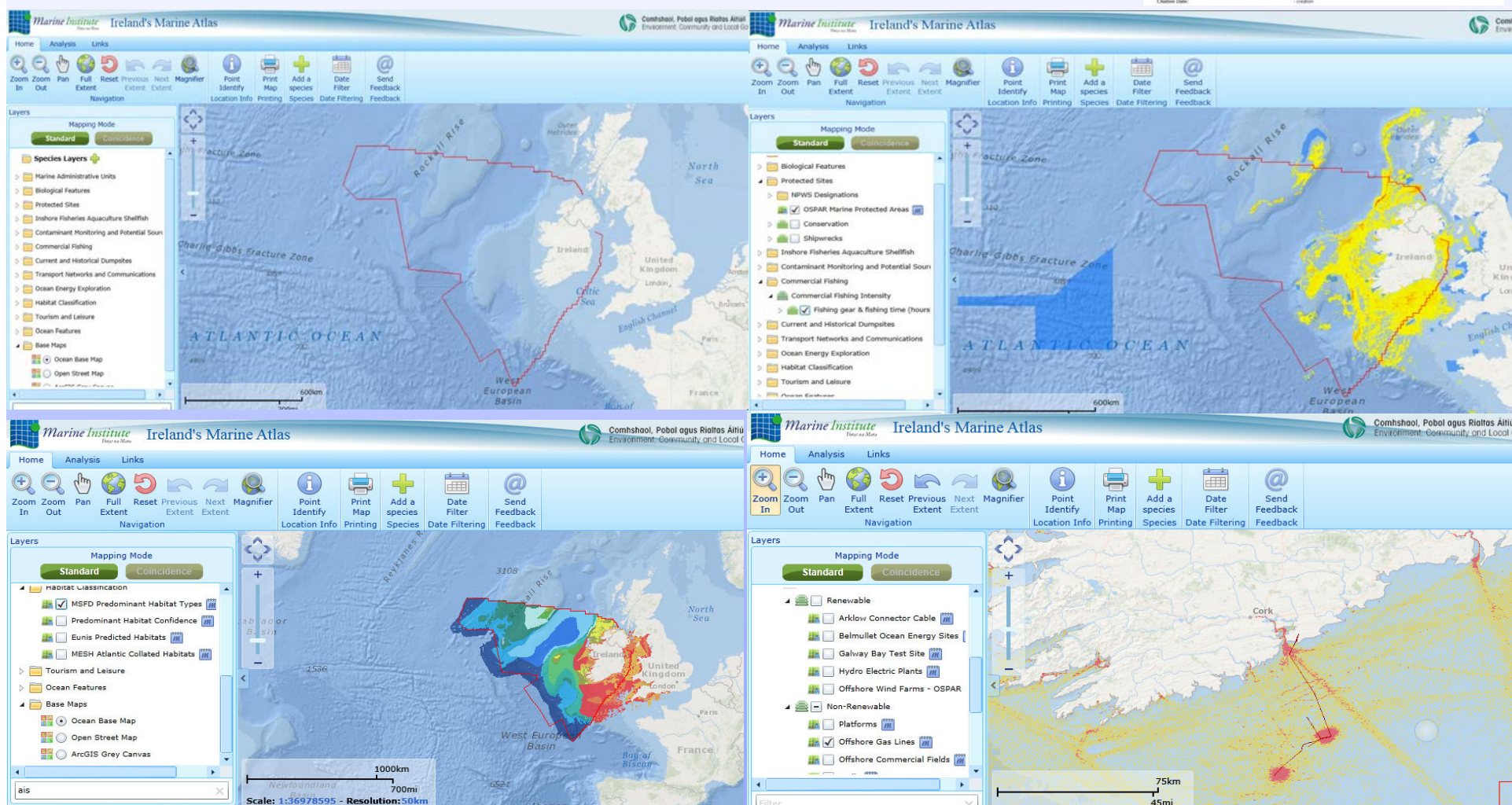
- MSFD Output: <http://atlas.marine.ie>
- 12 Marine themes / 100+ data layers
- OSPAR (Regional Seas Convention) considering EU implementation

Home Map Viewer About **ISDE**

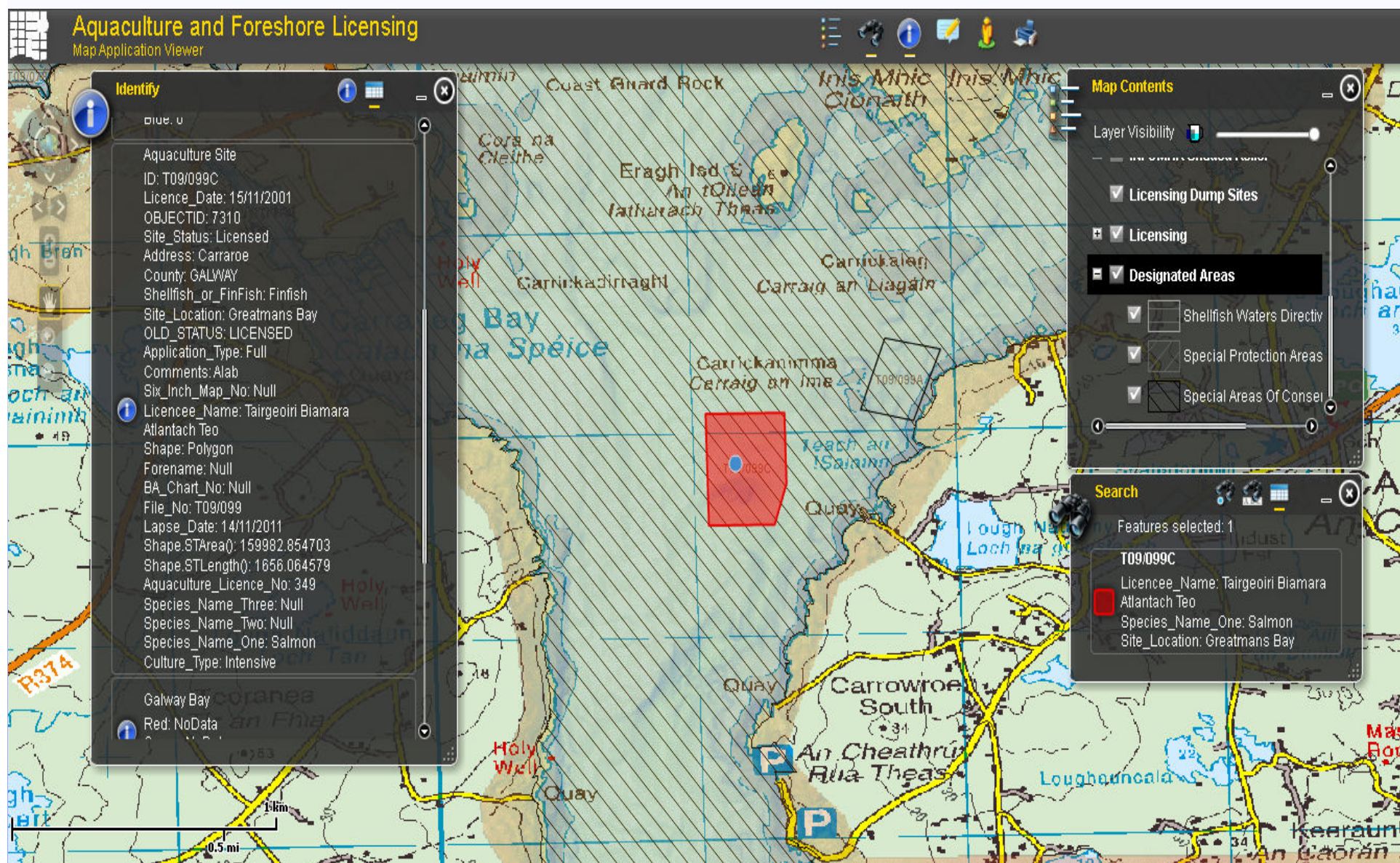
ISDE
Irish Spatial Data Exchange

Metadata Record

Description	Resource	Access	Distribution	Quality	Metadata
Identification Information					
Title:	MSFD Predominant Habitat Types				
Alternative Title:	Predominant Habitat				
Creation Date:	2010-12-07 10:00:00 - publication				
Publication Date:	- creation				



Refined Decision Tools



Education, Outreach, Citizen Science

Kilkieran Bay Marine Life

A series of photographs taken during dive expeditions of Kilkieran Bay.

www.arcgis.com/apps/MapTour

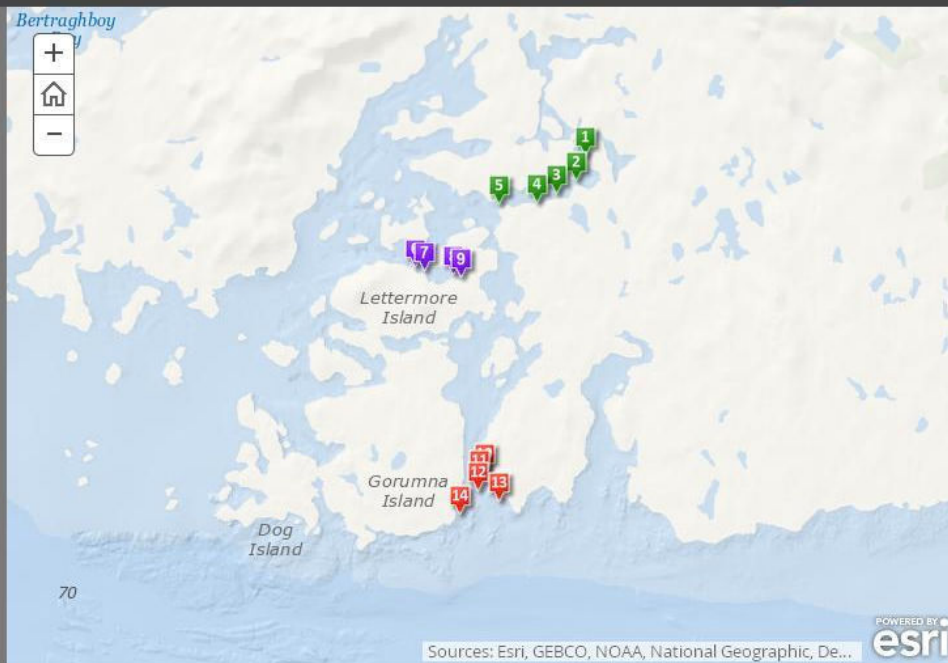
Switch to
builder mode

Sub Aqua Club



Exploring the diverse
underwater flora and
fauna in Kilkieran Bay.

Kilkieran Bay is a complex marine inlet which
opens into the North Sound of Galway Bay, in the
west of Ireland. It is subject to high wave
exposure towards the entrance, and has
extremely sheltered areas at the head of the



Alcyonium digitatum



Serpula vermicularis



Alcyonium glomeratum



Ascidia mentula



Cerianthus lloydii



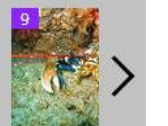
Corynactis virida



Urticina felina



Necora puber



Homarus g...



start



Inbox - Microsoft Out...

Untitled - ArcMap - Ar...

Notice of Survey Ops...

Kilkieran Bay Marine L...

EN

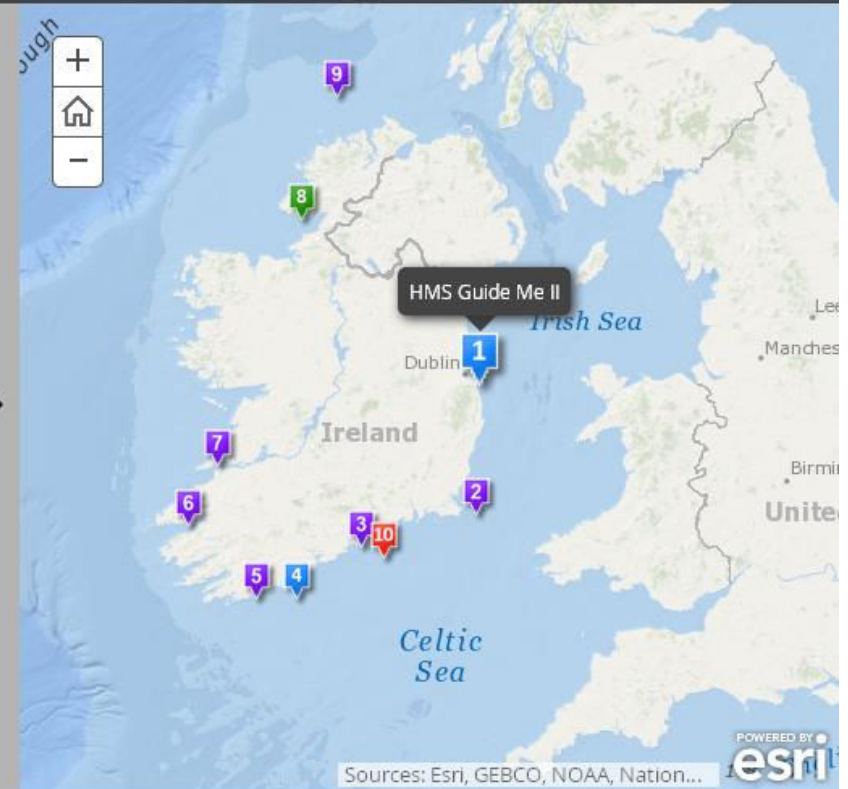


14:20

Shipwrecks in Irish Waters

A selection from the vast collection of acoustic images of shipwrecks acquired during the national seabed mapping projects - INSS and INFOMAR

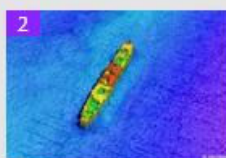
Switch to
builder mode



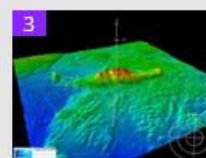
Sources: Esri, GEBCO, NOAA, Nation...



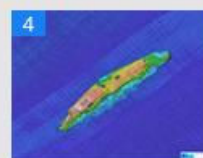
HMS Guide Me II



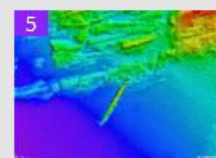
SS Volun



SS Enlia



RMS Lusitania



IL260



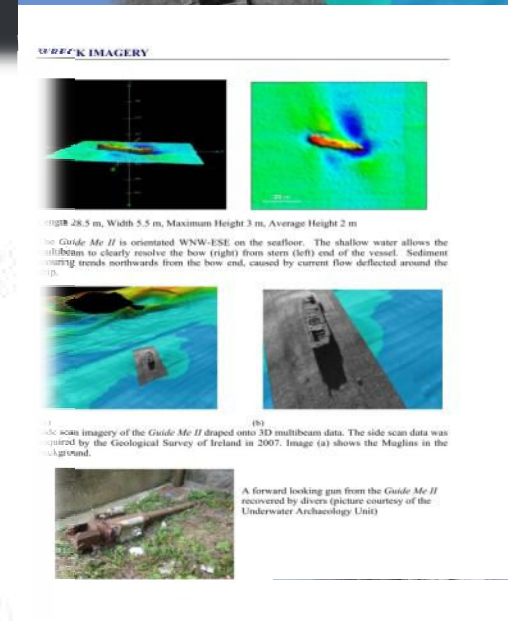
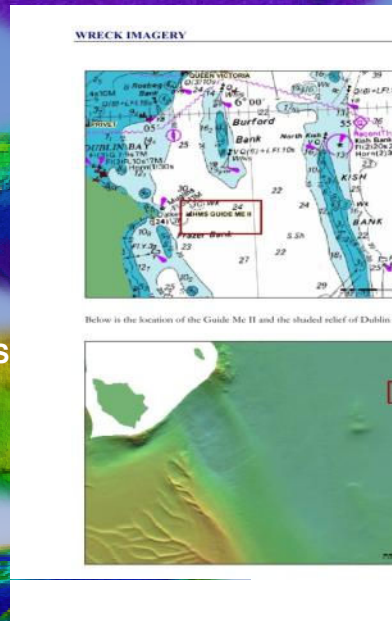
SS Manchester Merchant



SS Premier



Shipwrecks mapped in Irish Waters



•UC-42

•RMS Lusitania

•Rask

•SS Ydun

•Sir Charles Napier

•RMS Leinster

•HMS Vanguard



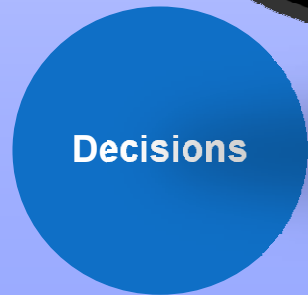
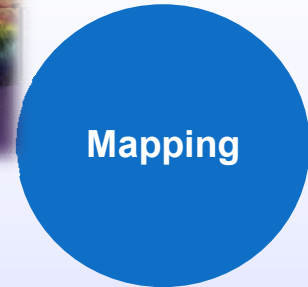
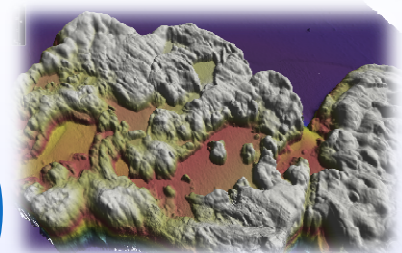
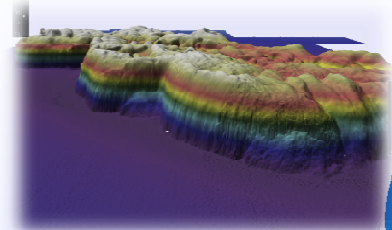
An Roinn
Ealaíon, Oidhreachta agus Gaeltachta
Department of
Arts, Heritage and the Gaeltacht



Ireland's Role / Marine Mapping / Adding Value
Expanding Products

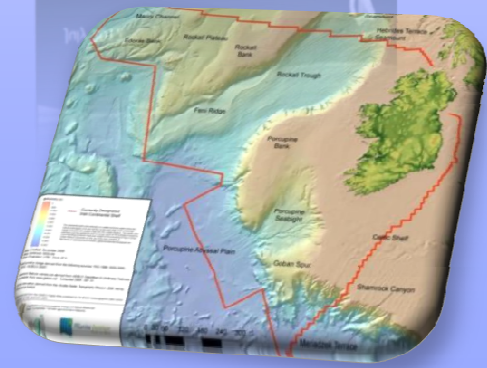
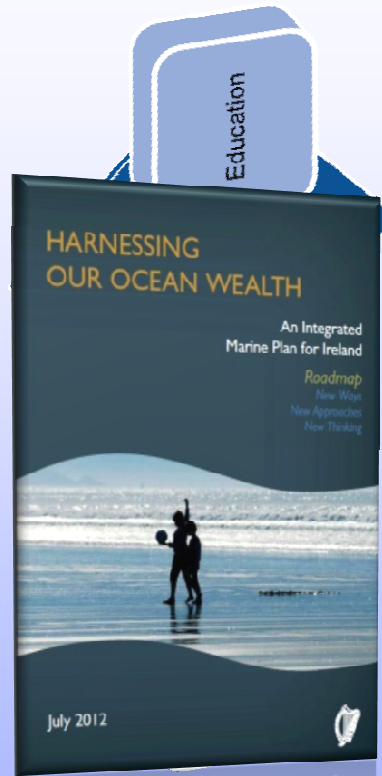


Evolution of The Real Map of Ireland



Double the value of our ocean wealth to 2.4% of GDP by 2030

Increase the turnover from our ocean economy to exceed €6.4bn by 2020



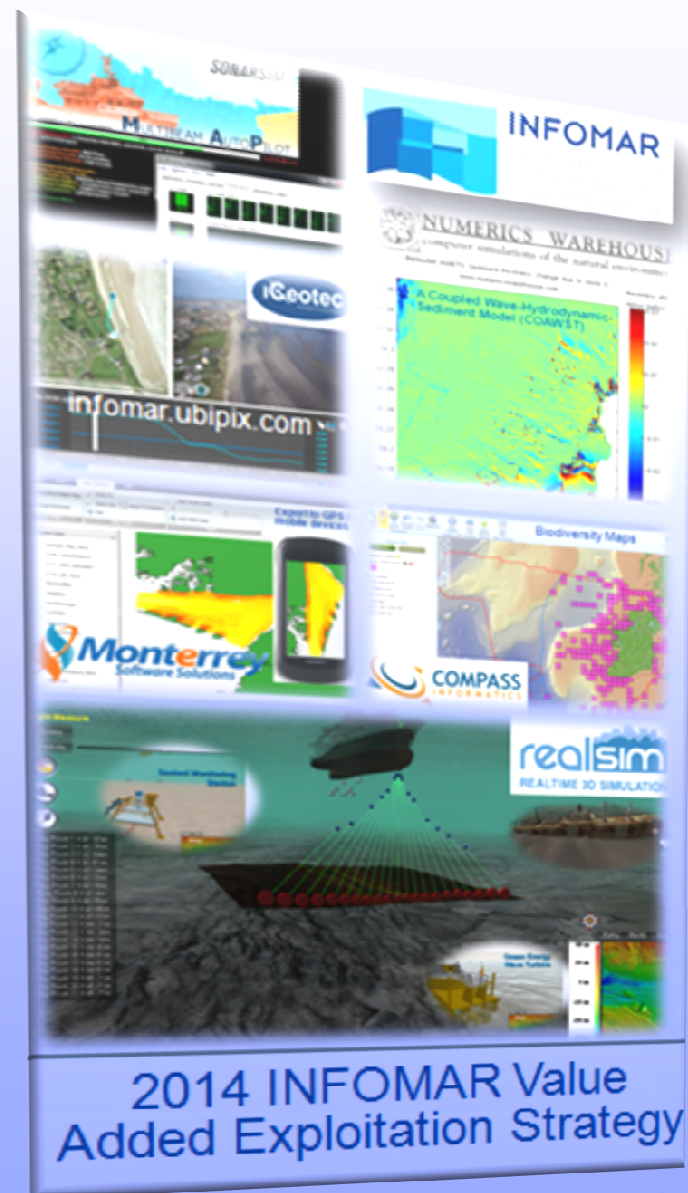
(M)Apping The Future

OUTPUTS IN DEVELOPMENT:

- Light Data Portal & INFOMAR Apps
 - *Tiled data*
 - *Dynamic model links*
- Schools Coding based Marine Project Toolkits
 - *Compiler / Field reporting platform*
- Regional Scale, Integrated, Land to Sea, Seamless Mapping
- Data Analytics & Feature Extraction

Harnessing Our Ocean Wealth:

- INFOMAR is Key Action (No. 23)
“Enabler of Research, Knowledge,
Technology & Innovation”



Oceans of Opportunity!

Real Map of the Atlantic?



Have the right information, make the right decisions!

Thank you!

See www.INFOMAR.ie to find out more!

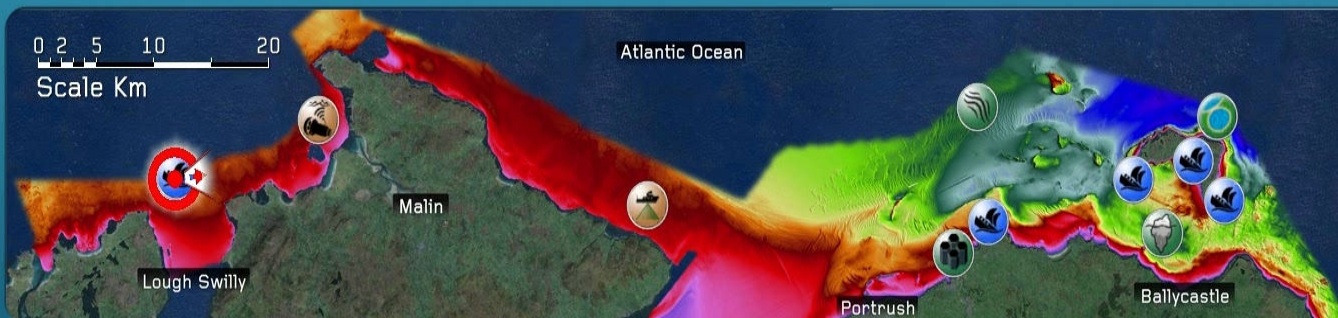
The Future Map of Ireland

Shipwrecks 

Landscape
Features 

Survey
Features 

0 2 5 10 20
Scale Km



Depth
Meters

0

50

100

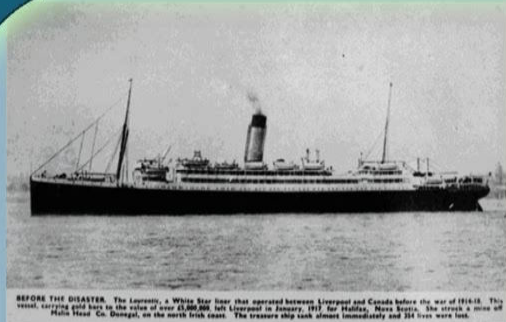
150

200

250

276

Navigation Mode



Name: SS Laurentic

Type: Ocean liner converted to armed
merchant cruiser

Built: 1908, converted in 1914

Lost: January 25rd, 1917

Cause: Struck a mine laid by U-boat
U-80. Sank within 60 minutes.

Lives Lost: approx. 354

Current Status: Now lies in approx. 36m water at
the entrance to Lough Swilly. 22 gold bars of her
cargo were never recovered.

Info

